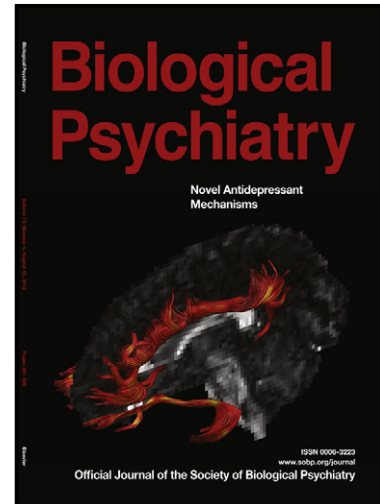


Author's Accepted Manuscript

Holocaust exposure induced intergenerational effects on *FKBP5* methylation

Rachel Yehuda PhD, Nikolaos P. Daskalakis MD, PhD, Linda M. Bierer MD, Heather N. Bader BS, Torsten Klengel MD, Florian Holsboer MD, PhD, Elisabeth B Binder MD, PhD



www.sobp.org/journal

PII: S0006-3223(15)00652-6
DOI: <http://dx.doi.org/10.1016/j.biopsych.2015.08.005>
Reference: BPS12638

To appear in: *Biological Psychiatry*

Cite this article as: Rachel Yehuda PhD, Nikolaos P. Daskalakis MD, PhD, Linda M. Bierer MD, Heather N. Bader BS, Torsten Klengel MD, Florian Holsboer MD, PhD, Elisabeth B Binder MD, PhD, Holocaust exposure induced intergenerational effects on *FKBP5* methylation, *Biological Psychiatry*, <http://dx.doi.org/10.1016/j.biopsych.2015.08.005>

This is a PDF file of an unedited manuscript that has been accepted for publication. As a service to our customers we are providing this early version of the manuscript. The manuscript will undergo copyediting, typesetting, and review of the resulting galley proof before it is published in its final citable form. Please note that during the production process errors may be discovered which could affect the content, and all legal disclaimers that apply to the journal pertain.

Holocaust exposure induced intergenerational effects on *FKBP5* methylation

Running title: Holocaust exposure and intergenerational *FKBP5* methylation

Rachel Yehuda, PhD^{1,2}, Nikolaos P. Daskalakis, MD PhD^{1,2}, Linda M. Bierer, MD^{1,2},

Heather N. Bader, BS^{1,2}, Torsten Klengel, MD^{3,6},

Florian Holsboer, MD, PhD^{4,5}, and Elisabeth B Binder MD, PhD^{3,6}

¹ Traumatic Stress Studies Division, Department of Psychiatry, Icahn School of Medicine at Mount Sinai, New York, New York, USA

² Mental Health Care Center, PTSD Clinical Research Program & Laboratory of Clinical Neuroendocrinology and Neurochemistry, James J. Peters Veterans Affairs Medical Center, Bronx, New York, USA

³ Dept. of Translational Research in Psychiatry, Max Planck Institute of Psychiatry, Munich, Germany

⁴ Max Planck Institute of Psychiatry, Munich, Germany; ⁵HMNC Holding GmbH, Munich, Germany

⁶ Department of Psychiatry and Behavioral Sciences, Emory University School of Medicine, Atlanta, Georgia, USA.

Correspondence: Dr. Rachel Yehuda

Traumatic Stress Studies Division

Department of Psychiatry, Mount Sinai School of Medicine

Mental Health Care Center, James J. Peters Veterans Affairs Medical Center

526 OOMH PTSD 116/A, 130 West Kingsbridge Road, Bronx, New York 10468

Email: Rachel.yehuda@va.gov

Abstract

Background: The involvement of epigenetic mechanisms in intergenerational transmission of stress effects has been demonstrated in animals but not in humans.

Methods: Cytosine methylation within the gene encoding for FK506-binding-protein-5 (FKBP5) was measured in Holocaust survivors (n=32), their adult offspring (n=22), and respective demographically comparable parent (n=8) - offspring (n=9) controls. Cytosine-phosphate-guanine (CpG) sites for analysis were chosen based on their spatial proximity to the intron 7 glucocorticoid-response-elements (GREs).

Results: Holocaust exposure had an effect on *FKBP5* methylation that was observed in exposed parents (F0) as well in their offspring (F1). These effects were observed at bin 3/site 6. Interestingly, in Holocaust survivors, methylation at this site was higher in comparison to controls, whereas in Holocaust offspring, methylation was lower. F0 and F1 methylation levels were significantly correlated. In contrast to the findings at bin 3/site 6, offspring methylation at bin 2/sites 3-5 associated with childhood physical and sexual abuse in interaction with an *FKBP5* risk-allele, previously associated with vulnerability to psychological consequences of childhood adversity. The findings suggest the possibility of site-specificity to environmental influences, as sites in bins 3 and 2 were differentially associated with parental trauma and the offspring's own childhood trauma, respectively. *FKBP5* methylation averaged across the three bins examined, associated with wake-up cortisol levels, indicating functional relevance of the methylation measures.

Conclusions: This is the first demonstration of transmission of pre-conception parental trauma to child associated with epigenetic changes in both generations, providing a potential insight into how severe psychological trauma can have intergenerational effects.

Keywords: *FKBP5*, epigenetics, intergenerational, PTSD, cortisol, stress

Introduction

Parental trauma exposure is associated with greater risk for PTSD, mood, and anxiety disorders in offspring (1, 2). Biological alterations associated with PTSD, and/or other stress-related disorders have also been observed in offspring of trauma survivors who do not themselves report trauma exposure or psychiatric disorder (3-5). Animal models have demonstrated that stress-exposure can result in epigenetic alterations in the next generation, and such mechanisms have been hypothesized to underpin vulnerability to symptoms in offspring of trauma survivors (6-9).

Enduring behavioral responses to stress and epigenetic alterations in adult offspring have been demonstrated to be mediated by changes in gametes (10-13), *in utero* effects (14), variations in early postnatal care (15, 16) and/or other early life experiences (17) that are influenced by parental exposure (18). Converging data indicate that some findings in offspring may represent a biological accommodation to either the parental exposure, or its biobehavioral consequences. For example, lower 11 β -hydroxysteroid dehydrogenase type 2 (11 β -HSD-2) activity was observed in Holocaust survivors compared to controls, presumably reflecting an enduring adaptive response to extreme nutritional deprivation (19). However, higher 11 β -HSD-2 activity was noted in Holocaust offspring (20). It was suggested that if 11 β -HSD-2 activity was lower during pregnancy in survivor mothers, this would expose the fetus to higher maternal glucocorticoids, resulting in the adaptation of higher 11 β -HSD-2 activity in offspring (20), and in greater susceptibility to adult hypertension and metabolic syndrome (21), as has been previously observed (22).

Another model for epigenetic changes in offspring is that parental exposures produce changes that are not necessarily observed in the parent (23). Differential methylation of the

glucocorticoid receptor (GR) gene (*NR3C1*) exon 1_F promoter associated with maternal behavior has been observed in F1 in rodents (16) and in human offspring with parental PTSD (24). In rodents, these changes are a function of differences in postnatal maternal care, and in humans, may reflect inconsistent attachments or other experiences resulting from the caregiver's symptoms.

Since parental trauma exposure has been linked with offspring trauma, particularly, childhood emotional abuse (25), it has been difficult to disentangle effects of parental exposure from those potentially conferred by the offspring's early experiences (24). A major gap in the clinical literature is that parents and their adult offspring have not been studied in tandem, making it difficult to understand the origin of changes in association with parental exposure. Furthermore, whereas some aspects of offspring phenotype are similar to that observed in parents, offspring also show a range of responses reflecting multiple contributors (24). Thus, we investigated epigenetic changes in *FKBP5* methylation in Holocaust survivors, offspring and demographically-matched Jewish parent-offspring pairs from peripheral blood samples to determine whether Holocaust exposure and/or PTSD symptoms, and offspring's own experience were associated with changes in *FKBP5* methylation in the Holocaust offspring.

We focused on *FKBP5*, an important regulator of GR-sensitivity (26), alterations of which have been associated with both PTSD and intergenerational effects (27, 28). *FKBP5* effectively decreases glucocorticoid binding to GR, impeding GR-translocation to the nucleus (29, 30). In turn, *FKBP5* gene expression is regulated by GR-binding, forming an intracellular ultra-short glucocorticoid negative-feedback loop that regulates *FKBP5* and GR (26, 31). *FKBP5* gene expression has been shown to be altered in PTSD and major depression (32-35). *FKBP5* SNPs have additionally been shown to interact with early trauma to predict both PTSD and

major depression (36, 37), possibly through involvement of allele-specific, environmentally-dependent changes in methylation of specific CpG sites (38).

After extensive investigation of all relevant regions in the *FKBP5* gene that had GR-binding signals including the promoter regions and introns 2, 5 and 7 (31, 39), Klengel et al. demonstrated that only intron 7 CpG sites were differentially methylated in response to early abuse in the presence of *FKBP5* rs1360780 risk-allele (38). Intron 7 sites are located within, or in proximity to, functional consensus glucocorticoid response elements (GREs) and are demethylated by glucocorticoids, particularly during developmentally sensitive periods (38).

The transcriptional relevance of intron 7 sites was demonstrated in a series of steps. First, an experiment using chromatin conformation capture revealed that intron 7 is in direct physical contact with the *FKBP5* transcriptional-start-site (TSS) (38). Second, reporter-gene assays established that methylation of the sites affected *FKBP5* gene expression (38). Third, using a multipotent human hippocampal progenitor cell line, four of these sites (3 to 6) were shown to be demethylated by glucocorticoid administration (38). Early abuse induced demethylation in the presence of the *FKBP5* risk-allele was demonstrated for three of the sites (3 to 5) in adult peripheral blood (38).

Accordingly, it was of interest to examine intron 7 methylation in the context of intergenerational trauma effects. We hypothesized differential methylation in Holocaust survivors (F0) compared to non-exposed demographically matched Jewish controls. We further hypothesized that Holocaust offspring (F1) would show methylation changes in the same sites as their parents as evidence of intergenerational transmission. In order to examine early abuse effects in offspring that might be distinguishable from 'transmitted' effects, we evaluated childhood adversity in offspring.

Methods and Materials

Sample

The sample represents a subset of a larger sample of Holocaust survivors, offspring, and comparison subjects for which clinical and neuroendocrine data have been previously published (4, 40), based on the availability of blood samples for DNA extraction and participants' consent for DNA analysis.

The majority of Holocaust survivors was initially recruited from 1993-1995 and studied 10 years later as part of a longitudinal follow-up. At that time, participants were asked about the possibility of referring their offspring to evaluate potential intergenerational effects. Holocaust offspring and their parents were also recruited by advertisement for a separate project evaluating intergenerational effects of parental trauma exposure and PTSD, including future examination of molecular aspects of PTSD. All study procedures were approved by the IRB at Icahn School of Medicine and Bronx Veterans Affairs Medical Center, and all participants provided written, informed consent.

Holocaust survivors were defined as being interned in a Nazi concentration camp, having witnessed or experienced torture, or having to flee or hide during WWII. Demographically comparable controls were living outside of Europe during WWII. All F1 participants were raised by their biological parents. Following a medical and psychological evaluation, participants were excluded for: serious illness or any disease requiring ongoing systemic steroid treatment; substance abuse or dependence within the previous 6 months; lifetime history of psychosis. The full set of inclusion/exclusion criteria, including clinical evaluation procedures, is described in (4, 40).

The present sample represents data from 40 parents and 31 offspring. Among the F0 cohort, data were available for both parents in 5 cases. For the F1 cohort, data were included from multiple siblings in two cases.

Procedure

Psychiatric diagnoses were determined using the Structured Clinical Interview for DSM-IV (41), and PTSD was ascertained with the Clinician-Administered PTSD Scale (42).

The Childhood Trauma Questionnaire (CTQ) (43) was completed by the F1. Holocaust F1 completed the Parental PTSD Questionnaire, which asks offspring to rate parental PTSD symptoms and severity of Holocaust exposure (46). The Beck Depression Inventory and Spielberger State-Trait Anxiety Inventory were used as measures of symptom severity (44, 45).

Blood samples were obtained at 8 a.m. F1 collected saliva into Salivette tubes (Starstedt) at awakening and bedtime.

Biological Measures

The primary biological measure was *FKBP5* intron 7 methylation; other measures were *FKBP5* rs1360780 genotype and salivary cortisol at wake-up and bedtime.

Cytosine methylation sodium bisulfite mapping. DNA from whole blood was isolated using Puregene Kit (Gentra Systems). Genomic DNA was bisulfite treated using the EZ-Gold Kit (Zymo). Methylation analysis of the bisulfite-treated genomic DNA by pyrosequencing was performed by Varionostic. Three pyrosequencing primer pairs were designed to cover three regions of the *FKBP5* intron 7 GR-binding sequence (38). Sequencing was performed on the Q24 System with PyroMark Q24 analysis software (Qiagen) and yielded percent methylation levels for the 6 intron 7 CpGs (sites 1 to 6) grouped into three bins (Fig.1).

Genotyping. *FKBP5* rs1360780 was genotyped using a differential hybridization protocol on LightCycler 480 (Roche). This method failed for 6 of 71 samples, but five were genotyped by pyrosequencing on a PSQ96 (Qiagen), omitting one F0 sample from analysis. Genotypes of rs1360780 were in Hardy-Weinberg equilibrium ($p > 0.05$). Participants were divided according to genotype data into protective-genotype (GG) and risk-allele carriers (AG/AA).

Hormone Measurement. Cortisol levels were determined as previously described (47). The intra- and inter-assay coefficients of variation were 2.3% and 6.1%, respectively.

Statistical Analysis

Demographic and clinical characteristics were compared respectively, for F0 and F1 groups using analyses of variance and chi-square analyses, as appropriate. Likelihood ratio chi-square results are presented when one or more of the cells did not meet minimum sample size.

The primary analyses concerned group differences between Holocaust survivors or offspring, and their respective comparison subjects, in methylation for the three intron 7 bins. The multivariate ANCOVAs for F0 and F1 comparisons used age, gender, and diagnosis of current mood and anxiety disorders, as well as additional variables specified in the text, as covariates. As previously reported (38), intron 7 sites are grouped into three bins based on the pyrosequencing method that necessitates the examination of short sequencing reads (Fig.1). A main effect for bin was followed by post-hoc tests investigating if the bin effect reflected a particular influence by a specific site(s). Regression analyses examined the relative contribution of parental Holocaust exposure, F0 *FKBP5* methylation, maternal and paternal PTSD, childhood adversity, and F1 *FKBP5* genotype to F1 *FKBP5* methylation.

A secondary analysis investigated the impact of physical and sexual abuse on *FKBP5* methylation at intron 7, bin 2 based on prior work (38). A composite CTQ score for physical and sexual abuse, was used to explore differential associations with methylation in the entire offspring sample, and, in subjects identified by the presence and absence of the *FKBP5* risk-allele. When an effect was found, further analyses investigated if a single or multiple sites were driving the effect. The significance of the difference between two correlation coefficients was evaluated using the Fisher r-to-z transformation.

F0 and F1 methylation correlations were performed only for bin 3/site 6 as this was the single site for which an effect of Holocaust exposure was observed. The functional effect of intron 7 methylation was assessed in relation to the intron 7, bin average based on the experiments of Klengel et al. (38) showing transcriptional effects when the three bins/six sites were experimentally methylated, and tested concurrently. Finally, statistical significance for all analyses was set at two-tailed, $p < .05$.

Results

Holocaust survivor and comparison group demographic characteristics

Demographic and clinical characteristics of Holocaust survivor and comparison groups are detailed in Table 1. There were no significant differences between the groups in age, gender, years of education, current anxiety or mood disorder diagnoses, or frequency of the *FKBP5* risk-allele. Holocaust survivors differed from controls in presence and severity of current PTSD as anticipated.

Holocaust offspring and comparison group demographic characteristics

Demographic and clinical characteristics of Holocaust offspring and comparison groups are displayed in Table 2. There were no significant differences between the groups in age, gender, years of education, childhood trauma scores, psychiatric diagnoses, frequency of the *FKBP5* risk-allele, or cortisol levels. However, there were significant differences in a composite score of depression and anxiety self-ratings.

***FKBP5* intron 7 methylation in Holocaust survivors and F0 comparison subjects**

A multivariate ANCOVA comparing Holocaust survivors and F0 controls on intron 7 methylation showed 10% higher levels in bin 3/site 6 in survivors (controls: 51.33 ± 2.10 , survivors: 56.39 ± 1.03 ; $F_{1,31} = 4.34$, $p=.046$, Fig.2A). The finding remained significant when the presence of PTSD was entered as an additional covariate ($p=.049$). The addition of presence/absence of the *FKBP5* risk-allele as a covariate did not appreciably alter the finding ($p=.053$), suggesting that bin 3/site 6 methylation changes in F0 were driven more by exposure than genetic variation in this SNP. There was no significant main effect of F0 PTSD diagnosis on bin 3/site 6 methylation ($F_{1,31} = 0.33$, *ns*). No differences between Holocaust survivors and F0 controls were apparent for Bins 1 and 2.

***FKBP5* intron 7 methylation Holocaust offspring and F1 comparison subjects**

When a similar analysis was performed for F1, significantly lower intron 7 methylation (7.7 % difference) was observed at bin 3/site 6 in Holocaust offspring than comparison subjects (controls: 57.58 ± 1.63 , offspring: 53.13 ± 1.00 , $F_{1,25} = 5.03$, $p=.034$, Fig.2B). The finding was unchanged without covariation ($F_{1,29} = 4.91$, $p=.035$), and when presence of lifetime PTSD in offspring ($p=.036$) or severity of childhood trauma ($p=.049$) were added, respectively, as

additional covariates. In contrast, the effect was reduced when controlling for parental PTSD ($F_{1,23}=2.59$, $p=.121$), suggesting an influence of parental PTSD symptoms.

A linear regression confirmed that parental Holocaust exposure was the salient predictor of offspring's bin 3/site 6 methylation ($\beta = -.368$, $p=.034$). Serial regression models were used to identify additional predictors of bin 3/site 6 methylation. Neither parental PTSD ($\beta = .134$, ns), nor the presence of the *FKBP5* risk-allele ($\beta = -.044$, ns) contributed to the model. In each of these, however, parental exposure remained a significant predictor (respectively, $\beta = -.461$, $p=.054$; $\beta = -.362$, $p=.043$). Adding childhood adversity as measured by the CTQ total score did not alter the predictive significance of parental exposure ($\beta = -.359$, $p=.049$), and was not a predictor of bin 3/site 6 methylation ($\beta = -.034$, ns). Since emotional abuse is reported substantially more often by Holocaust survivor offspring (25), and was so in this sample at a trend level of significance ($t = -1.98$, $df=24.89$, $p=.059$), we tested emotional abuse in the regression model. However, like the CTQ total score, emotional abuse was not significantly associated with bin 3/site 6 methylation ($\beta = .018$, ns), and did not alter the significance of Holocaust exposure at this site ($\beta = -.375$, $p=.045$).

Childhood adversity effects on *FKBP5* intron 7 methylation in offspring

An analysis was then performed to attempt to replicate a previous report on a traumatized inner city population showing significant effects of the interaction of physical and sexual abuse with the *FKBP5* risk-allele on methylation at intron 7, bin 2/sites 3-5.

For protective-genotype carriers ($n=13$), physical and sexual abuse was positively associated with bin 2 methylation ($r=.698$, $p=.008$). For risk-allele carriers ($n=18$), there were significant negative associations with bin 2 methylation ($r = -.479$, $p=.044$). These associations were driven by the association at site 3 with CTQ scores for physical abuse (for protective-

genotype carriers: $r=.707$, $p=.007$ and for risk-allele carriers: $r=-.610$, $p=.007$; Fig.3). The correlations at site 3 with physical abuse differed significantly according to the presence of the risk-allele ($z=3.89$, $p<.001$; Fig.3).

F0 *FKBP5* intron 7 methylation at bin 3 predicts F1 *FKBP5* intron 7 methylation at bin 3

F0 bin 3/site 6 methylation at was correlated with F1 methylation at the same site ($r=.441$, $n=33$, $p=.010$; Fig.4). This association was primarily driven by the Holocaust-exposed families ($r=.569$, $n=23$, $p=.005$ for Holocaust-exposed, compared to $r=.370$, $n=10$, ns for controls). Covariation for the presence of the *FKBP5* risk-allele in both generations did not substantially alter the association of bin 3/site 6 methylation between survivors and offspring ($r=.438$, $df=29$, $p=.014$), or within the Holocaust-exposed families ($r=.559$, $df=19$, $p=.008$).

As a result of the above analyses, we added F0 bin 3/site 6 methylation to the regression analyses testing predictors of F1 bin 3/site 6 methylation. F0 methylation did not alter the significance of parental Holocaust exposure as a predictor of bin 3/site 6 methylation in F1 ($\beta=-.418$, $p=.022$).

***FKBP5* methylation is associated with wake-up cortisol in offspring**

Intron 7 *FKBP5* bin average methylation was negatively correlated with wake-up cortisol ($r=-.630$, $df=16$, $p=.005$, controlling for age, gender and current mood/anxiety disorder). This association was also significant without covariation ($r=-.432$, $n=22$, $p=.044$; Fig.5). The correlations of bin average methylation with bedtime cortisol were not significant ($r=-.216$, $df=13$, ns and $r=-.137$, $n=19$, ns , respectively).

Discussion

The main finding in this study is that Holocaust survivors and their offspring have methylation changes on the same site in a functional intronic region of the *FKBP5* gene, a GR-binding sequence in intron 7, but in the opposite direction. To our knowledge, these results provide the first demonstration of transmission of pre-conception stress effects resulting in epigenetic changes in both exposed parents and their offspring in adult humans. Bin 3/site 6 methylation was not associated with the *FKBP5* risk-allele, and could not be attributed to the offspring's own trauma exposure, their own psychopathology, or other examined characteristics that might independently affect methylation of this gene. Yet, it could be attributed to Holocaust exposure in the F0.

It is not possible to infer mechanisms of transmission from these data. It was not possible to disentangle the influence of parental gender, including *in utero* effects, since both Holocaust parents were survivors. Epigenetic effects in maternal or paternal gametes are a potential explanation for epigenetic effects in offspring (10-13), but blood samples will not permit ascertainment of gamete dependent transmission. What can be detected in blood samples is parental and offspring experience-dependent epigenetic modifications. Future prospective, longitudinal studies of high risk trauma survivors prior to conception, during pregnancy and postpartum may uncover sources of epigenetic influences. In addition, it would be of interest to replicate our findings on *FKBP5* intron 7 methylation in other populations with substantial trauma exposure. For example, peripheral blood from female survivors of the Tutsi genocide who were pregnant at the time of exposure and their adolescent offspring was analyzed for *NR3C1* and *NR3C2* promoter methylation (48). Interestingly, in that study exposure effects were identified at specific sites in both exposed mothers and offspring, and mothers' methylation correlated with offspring methylation. It is also necessary to investigate multiple generations to

differentiate among exposure effects, epigenetic inheritance and social transmission (9). Animal models can provide further mechanistic understanding of how extreme stress effects mediate changes in offspring.

Despite the potential limitations of our cross-sectional approach, a significant effect of severe parental trauma was observed in both generations at the same site of a transcriptionally relevant region of a stress-related gene. The Holocaust effects in F0 and F1 methylation are not likely driven by respective differences in controls. F0 and F1 controls differed substantially in age (F0:~75y vs. F1:~45y) which could explain their 12% methylation difference at bin 3/site 6, since *FKBP5* site-specific demethylation occurs with age (49). The directional difference in bin 3/site 6 methylation between Holocaust survivors and their offspring was unexpected, but may reflect an intergenerational biological accommodation. We previously reported a directional difference between parental and offspring in 11 β -HSD-2 activity, which was interpreted as an accommodation in the offspring during a sensitive developmental window to the biological consequences of parental trauma exposure (20). Like *FKBP5*, 11 β -HSD-2 is a moderator of glucocorticoid action and, in the aforementioned study, the increase in offspring 11 β -HSD-2 activity was interpreted as a protective adaptation to mitigate exposure to elevated maternal glucocorticoids due to reduced maternal 11 β -HSD-2 activity (20, 50). Although no claims regarding gender specific effects can be made in this study, it is conceivable that *FKBP5* hypermethylation, leading to decreased *FKBP5* expression and increased GR-sensitivity in the F0 mothers, would result in lower circulating glucocorticoid levels during pregnancy, promoting demethylation in the fetus in order to optimize or increase glucocorticoid levels. However, pre-conception or post-natal influences are also possible, and offspring low cortisol levels may further regulate *FKBP5* methylation levels. At present, it is not clear whether glucocorticoid

programming in offspring reflects intergenerational consequences of parental exposure or offspring recalibration of glucocorticoid regulation of. Although imperfect, such studies provide an opportunity to understand development-dependent adaptations to environmental influences that contribute to individual stress-reactivity set points, and ultimately, vulnerability to psychopathology or resilience.

In contrast to the findings at bin 3/site 6, which relate to parental exposure, bin 2/sites 3-5 methylation was associated with offspring trauma exposure (childhood physical and sexual abuse), but the direction depended on the presence of the *FKBP5* risk-allele. Further analysis indicated that the effect was driven by a physical abuse induced site 3 demethylation in *FKBP5* risk-allele carriers. These results partially replicate previous findings (38) in which bin 2 demethylation was associated with physical and sexual abuse, the *FKBP5* risk-allele, and their interaction in two separate large cohorts. It should be noted that mean CTQ subscale and total scores for the Holocaust offspring were generally lower than reported in other population samples and only a small minority of offspring in this study would be considered “traumatized” according to previously reported criteria. However, this minority contributed clinically relevant variance to CTQ scores for physical and sexual abuse. Klengel et al. and other investigators (51, 52), focusing on early childhood trauma effects and the influence of the gene x early life environment interactions on methylation, did not assess the contribution of parental experiences, particularly trauma exposure. Our findings suggest that it is important to assess parental exposure characteristics since they may exert profound influences. Although different sites may be involved in mediating parental vs. offspring’s own early trauma, it is possible that the effect of offspring abuse may be an indirect consequence of parental trauma. Indeed, parental trauma

exposure has been shown to result in an increased prevalence of childhood abuse, most strongly emotional abuse, in offspring (25).

Despite different associations with methylation at bins 2 and 3, both appear to be functionally important in this sample, as previously reported (38). Furthermore, both bins within intron 7 appear to be equally sensitive to glucocorticoid-dependent *FKBP5* demethylation in a multipotent human hippocampal progenitor cell line (38). Bin 2 contains the first consensus GRE and bin 3/site 6 is located within the third GRE of *FKBP5* intron 7. These GREs come into contact with the TSS of *FKBP5* via chromatin interactions; alterations in methylation at bin 1, 2 and 3 affect GR-induced *FKBP5* gene transcription as shown by reporter-gene assay (38). Although we were unable to disentangle functional effects of methylation at distinct CpGs in intron 7, there is reason to believe that methylation at individual sites in the *FKBP5* gene may contribute to transcriptional and functional effects. Indeed, for the *NR3C1* gene, associations of individual sites with exposures to several types of adversity are increasingly recognized (52).

While the effects were relatively small, with 10% or less difference in DNA methylation, small differences of around 1-2% have been previously associated with differential gene expression of the closest gene in a mixed tissue with many cell-subtypes, such as peripheral blood (53). Therefore, there are likely specific immune cell-subtypes with more pronounced effects. In addition, even within the same cell type, observed global changes reflect diverse changes in single cells, as has been reported in a number of papers using clone-based sequencing for methylation analysis (for example (16, 17, 54). Lower methylation leading to higher *FKBP5* mRNA and protein levels has been linked to decreased GR-sensitivity (38), as supported in this study by the negative correlation between F1 intron 7, bin average methylation and wake-up cortisol levels. These effects could be mediated by the *FKBP5*-associated changes in GR-

function and HPA-axis regulation, or indirectly, through the interaction partners of this immunophilin in other neuroendocrine regulatory circuits mechanisms (29, 31, 55, 56).

In summary our data support an intergenerational epigenetic priming of the physiological response to stress in offspring of highly traumatized individuals. These changes may contribute to the increased risk for psychopathology in the F1 generation. Two sites anticipated to operate similarly to regulate *FKBP5* gene expression were demonstrated to have different environmental influences. The mechanism of intergenerational transmission of epigenetic effects at bin 3/site 6 is not known, but does not appear to be mediated by childhood adversity, as is the case for bin 2. From a biological perspective, accommodation to multiple environmental influences at distinct and potentially redundant sites on genes central to stress regulation would facilitate maximal stress responsivity and adaptation. Future studies should focus on assessing the effects of trauma at various developmental stages, as well as potential differences in maternal and paternal effects. Additionally, the mechanism of intergenerational transmission of trauma and functional importance of site-specificity remain to be explored. Early detection of such epigenetic marks may advance the development of preventive strategies to address the intergenerational sequelae of exposure to trauma.

Table 1

Parents (F0)	Holocaust	Jewish	Group Comparisons F(df) p or χ^2 (df) p
	Survivors (n=32) Mean \pm SD or n (%)	Comparison (n=8) Mean \pm SD or n (%)	
Age	77.9 \pm 5.2	73.1 \pm 8.5	F _(1,38) = 3.98, (p=.053)
Gender			χ^2 ₍₁₎ = 0.46, <i>ns</i>
Male	12 (37.5%)	2 (25.0%)	
Female	20 (62.5%)	6 (75.0%)	
Years of Education	9.2 \pm 4.1	12.3 \pm 3.0	F _(1,35) = 3.91, (p=.056)
Current PTSD ^a	16 (51.6%)	0 (0%)	χ^2 ₍₁₎ = 9.86, p=.012
Current Anxiety Disorder except PTSD ^b	4 (13.8%)	0 (0%)	χ^2 ₍₁₎ = 2.08, <i>ns</i>
Current Mood Disorder ^b	9 (31.0%)	0 (0%)	χ^2 ₍₁₎ = 5.13, <i>ns</i>
Biological Information			
FKBP5 Risk-allele	18 (58.1%)	3 (37.5%)	χ^2 ₍₁₎ = 1.08, <i>ns</i>

^a Clinician-Administered PTSD Scale (42); ^b Structured Clinical Interview for DSM-IV (41)

Table 2

Offspring (F1)	Holocaust Offspring (n=22) Mean ± SD or n (%)	Jewish Comparison (n=9) Mean ± SD or n (%)	Group Comparisons F(df)p or χ^2 (df) p
Age	46.0 ± 8.0	47.0 ± 8.5	$F_{(1,30)} = 0.10, ns$
Gender			$\chi^2_{(1)} = 1.06, ns$
Male	6 (27.3%)	1 (11.1%)	
Female	16 (72.7%)	8 (88.9%)	
Years of Education	16.4 ± 2.7	16.8 ± 1.8	$F_{(1,30)} = .14, ns$
Parental PTSD ^a			
Maternal PTSD	11 (52.4%)	0 (0%)	$\chi^2_{(1)} = 10.37, p=.011$
Paternal PTSD	11 (52.4%)	0 (0%)	$\chi^2_{(1)} = 10.37, p=.011$
Any Parent with PTSD	16 (76.2%)	0 (0%)	$\chi^2_{(1)} = 18.40, p<.001$
Childhood Trauma ^b			
Total Score	36.7 ± 11.5	30.2 ± 6.9	$F_{(1,30)} = 2.46, ns$
Emotional Abuse	9.0 ± 5.4	12.0 ± 3.3	$F_{(1,30)} = 2.57, ns$
Emotional Neglect	10.3 ± 4.1	8.0 ± 4.0	$F_{(1,30)} = 1.97, ns$
Physical Abuse	6.1 ± 2.5	5.4 ± 1.0	$F_{(1,30)} = 0.55, ns$
Physical Neglect	5.5 ± 1.4	5.2 ± 0.7	$F_{(1,30)} = 0.32, ns$
Sexual Abuse	5.6 ± 3.0	5.0 ± 0.0	$F_{(1,30)} = 0.40, ns$
Self-Reported Anxiety and Depression ratings ^d	40.0 ± 24.6	22.0 ± 12.3	$F_{(1,30)} = 4.32, p=.047$
Current Anxiety Disorder (except PTSD) ^e	8 (36.4%)	0 (0%)	$\chi^2_{(1)} = 6.56, p=.041$
Current Mood Disorder ^e	3 (13.6%)	0 (0%)	$\chi^2_{(1)} = 2.19, ns$
Biological Information			
FKBP5 Risk-allele ^f	14 (63.6%)	4 (44.4%)	$\chi^2_{(1)} = .10, ns$
Wake-up Cortisol ^g	738.4 ± 463.9	743.3 ± 337.5	$F_{(1,21)} = .01, ns$
Bedtime Cortisol ^g	250.3 ± 556.3	144.6 ± 72.9	$F_{(1,21)} = .21, ns$

^a Assessed using the Parental PTSD Questionnaire (46); ^b Childhood Trauma Questionnaire (43); ^c Clinician-Administered PTSD Scale (42); ^d Combined scores of the Beck Depression Inventory (BDI) and Spielberger State-Trait Anxiety Inventory (STAI-S and STAI-T) ^e Structured Clinical Interview for DSM-IV (41); ^f Presence of Risk-allele (A) in *FKBP5* rs1360780 SNP genotype; ^g Salivary Cortisol (ng/dL).

Accepted manuscript

Figure 1. Schematic representation of the human *FKBP5* locus with intron 7 glucocorticoid receptor (GR) binding sequence investigated in this study. The upper panel depicts the *FKBP5* locus in 5'-3' orientation. Black bars represent the 11 exons. The transcription-start-site (TSS) is highlighted in green. The lower panel represents the intron 7 amplicon (476 bp) chosen for DNA methylation analysis (primer sequence dark blue/italicized). Since pyrosequencing can only reliably generate short reads, the 6 cytosine-phosphate-guanine (CpG) sites (red) analyzed in 3 bins based on the proximity to three consensus glucocorticoid response elements (GREs) represented in bold/underlined (pyrosequencing primers are described in Klengel et al (38)). The two CpGs of Bin 1 were upstream of all GREs, the 3 CpGs of bin 2 are surrounding the first GRE and bin 3 represents the CpG within the third GRE. The chromosomal position (hg19) of the CpG sites is indicated on the left and the right of the lower panel.

Figure 2. Methylation at *FKBP5* intron 7, bins 1, 2 and 3 for Holocaust survivors (A), Holocaust survivor offspring (B) and their respective comparison subjects. The percent methylation (mean \pm s.e.m.) is represented by red bars for Holocaust survivor parents and their offspring (F0:n=32, F1:n=22) and by white bars for F0 and F1 controls (F0:n=8, F1:n=9). Division of sites into bins is indicated. Significance was set at $p < .05$.

Figure 3. Relationship between *FKBP5* intron 7, site 3 percent methylation and childhood trauma questionnaire (CTQ) physical abuse subscale score. The carriers of the *FKBP5* rs1360780 risk-allele (n=18) are depicted by black squares and the carriers of the protective-genotype (n=13) by black open circles. Significance was set at $p < .05$.

Figure 4. Relationship between F0 and F1 *FKBP5* intron 7 bin 3/site 6 percent methylation. Parent-offspring pairs are represented by red squares for Holocaust survivors (n=23) and by blue open circles for controls (n=10). Significance was set at $p < .05$.

Figure 5. Relationship between *FKBP5* intron 7, bin average percent methylation and wake-up salivary cortisol (ng/dL) in F1. Holocaust survivor offspring (n=14) are depicted by red squares and control subjects (n=8) by blue open circles. Significance was set at $p < .05$.

Accepted manuscript

ACKNOWLEDGMENTS

This work was supported by NIMH R01 MH 64675-01 “Biology of Risk and PTSD in Holocaust Survivor Offspring” and 1RC1MH088101-01 “Identification of an Epigenetic Risk Marker for PTSD”, and in part by a grant (5 M01 RR00071) for the Mount Sinai General Clinical Research Center from the National Institute of Health. The NIH had no further role in the study design; in the collection, analysis and interpretation of the data; in the writing of the report; or in the decision to submit the paper for publication. European Research Council starting grant (grant #281338, GxE molmech, FP7 framework program to EB. We thank Ms. Shelly Zemelman for coordinating participant recruitment.

AUTHOR CONTRIBUTIONS

RY, NPD, FH and EB designed the study. RY and EB supervised the project and data collection. LMB supervised the clinical assessments, and RY and NPD supervised the biological sample collection. NPD and TK performed the biological assays. HNB was responsible for data management of the project. RY, NPD, LMB, and HNB did primary analyses and drafted the manuscript. EB did additional analyses and edited the manuscript. All the authors discussed the results and commented on the final version of the manuscript.

FINANCIAL DISCLOSURES

RY and FH are co-inventors of the following patent application: “Genes associated with posttraumatic-stress disorder. European Patent# EP 2334816 A1”. FH and EBB are co-inventors of the following patent application: “FKBP5: a novel target for antidepressant therapy. European Patent# EP 1687443 B1.” All other authors report no biomedical financial interests or potential conflicts of interest.

References

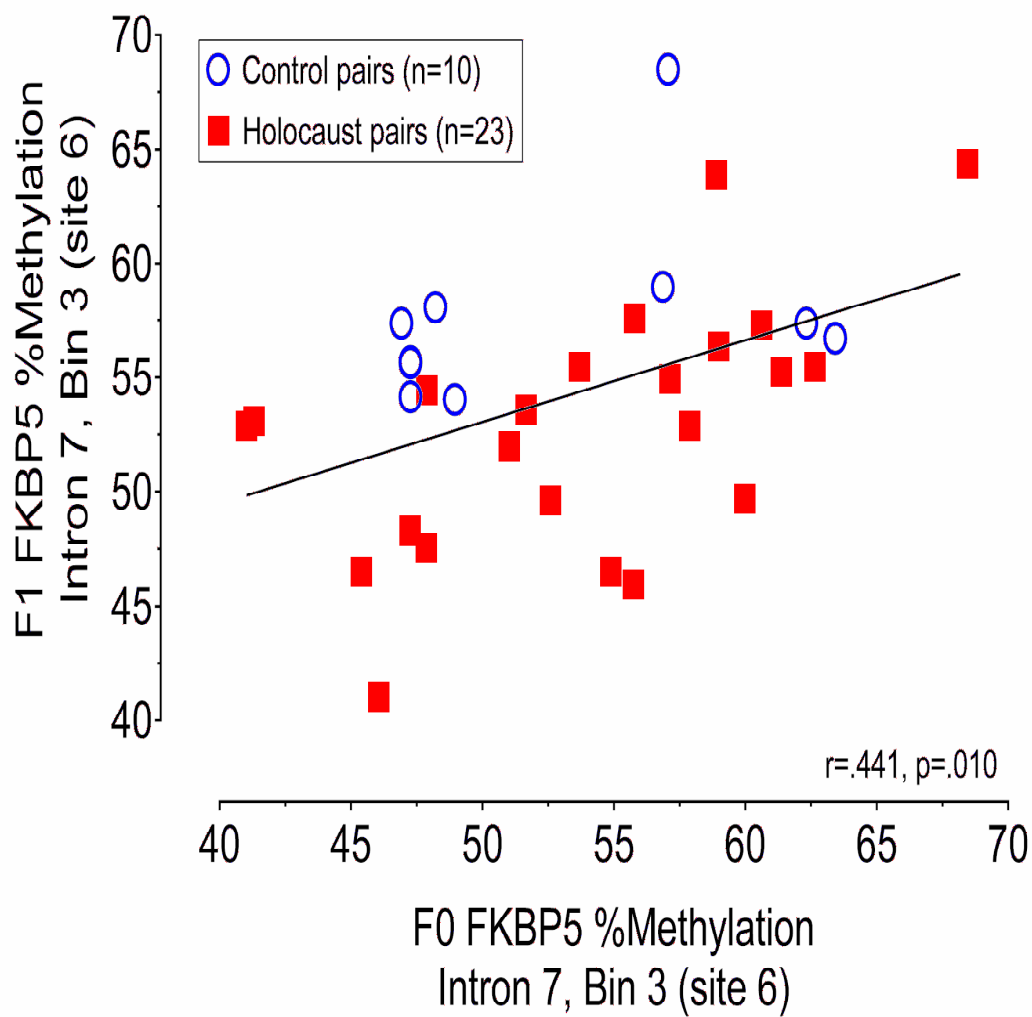
1. Yehuda R, Schmeidler J, Wainberg M, Binder-Brynes K, Duvdevani T (1998): Vulnerability to posttraumatic stress disorder in adult offspring of Holocaust survivors. *The American journal of psychiatry*. 155:1163-1171.
2. Weissman MM, Wickramaratne P, Nomura Y, Warner V, Verdeli H, Pilowsky DJ, et al. (2005): Families at high and low risk for depression: a 3-generation study. *Arch Gen Psychiatry*. 62:29-36.
3. Yehuda R, Bierer LM, Schmeidler J, Aferiat DH, Breslau I, Dolan S (2000): Low cortisol and risk for PTSD in adult offspring of holocaust survivors. *The American journal of psychiatry*. 157:1252-1259.
4. Yehuda R, Blair W, Labinsky E, Bierer LM (2007): Effects of parental PTSD on the cortisol response to dexamethasone administration in their adult offspring. *The American journal of psychiatry*. 164:163-166.
5. Yehuda R, Engel SM, Brand SR, Seckl J, Marcus SM, Berkowitz GS (2005): Transgenerational effects of posttraumatic stress disorder in babies of mothers exposed to the World Trade Center attacks during pregnancy. *The Journal of clinical endocrinology and metabolism*. 90:4115-4118.
6. Gapp K, von Ziegler L, Tweedie-Cullen RY, Mansuy IM (2014): Early life epigenetic programming and transmission of stress-induced traits in mammals: how and when can environmental factors influence traits and their transgenerational inheritance? *BioEssays : news and reviews in molecular, cellular and developmental biology*. 36:491-502.
7. Yehuda R, Bierer LM (2009): The relevance of epigenetics to PTSD: implications for the DSM-V. *Journal of traumatic stress*. 22:427-434.
8. Bale TL (2015): Epigenetic and transgenerational reprogramming of brain development. *Nat Rev Neurosci*. 16:332-344.
9. Dias BG, Maddox SA, Klengel T, Ressler KJ (2015): Epigenetic mechanisms underlying learning and the inheritance of learned behaviors. *Trends in neurosciences*. 38:96-107.
10. Dias BG, Ressler KJ (2014): Parental olfactory experience influences behavior and neural structure in subsequent generations. *Nature neuroscience*. 17:89-96.
11. Zaidan H, Leshem M, Gaisler-Salomon I (2013): Prereproductive stress to female rats alters corticotropin releasing factor type 1 expression in ova and behavior and brain corticotropin releasing factor type 1 expression in offspring. *Biol Psychiatry*. 74:680-687.
12. Franklin TB, Russig H, Weiss IC, Graff J, Linder N, Michalon A, et al. (2010): Epigenetic transmission of the impact of early stress across generations. *Biol Psychiatry*. 68:408-415.
13. Rodgers AB, Morgan CP, Bronson SL, Revello S, Bale TL (2013): Paternal stress exposure alters sperm microRNA content and reprograms offspring HPA stress axis regulation. *J Neurosci*. 33:9003-9012.
14. Boersma GJ, Lee RS, Cordner ZA, Ewald ER, Purcell RH, Moghadam AA, et al. (2014): Prenatal stress decreases Bdnf expression and increases methylation of Bdnf exon IV in rats. *Epigenetics : official journal of the DNA Methylation Society*. 9:437-447.
15. Champagne FA, Weaver IC, Diorio J, Dymov S, Szyf M, Meaney MJ (2006): Maternal care associated with methylation of the estrogen receptor-alpha1b promoter and estrogen receptor-alpha expression in the medial preoptic area of female offspring. *Endocrinology*. 147:2909-2915.

16. Weaver IC, Cervoni N, Champagne FA, D'Alessio AC, Sharma S, Seckl JR, et al. (2004): Epigenetic programming by maternal behavior. *Nature neuroscience*. 7:847-854.
17. Murgatroyd C, Patchev AV, Wu Y, Micale V, Bockmuhl Y, Fischer D, et al. (2009): Dynamic DNA methylation programs persistent adverse effects of early-life stress. *Nature neuroscience*. 12:1559-1566.
18. Champagne FA, Meaney MJ (2006): Stress during gestation alters postpartum maternal care and the development of the offspring in a rodent model. *Biol Psychiatry*. 59:1227-1235.
19. Yehuda R, Bierer LM, Andrew R, Schmeidler J, Seckl JR (2009): Enduring effects of severe developmental adversity, including nutritional deprivation, on cortisol metabolism in aging Holocaust survivors. *Journal of psychiatric research*. 43:877-883.
20. Bierer LM, Bader HN, Daskalakis NP, Lehrner AL, Makotkine I, Seckl JR, et al. (2014): Elevation of 11beta-hydroxysteroid dehydrogenase type 2 activity in Holocaust survivor offspring: evidence for an intergenerational effect of maternal trauma exposure. *Psychoneuroendocrinology*. 48:1-10.
21. Flory JD, Bierer LM, Yehuda R (2011): Maternal exposure to the holocaust and health complaints in offspring. *Disease markers*. 30:133-139.
22. Barker DJ (1998): In utero programming of chronic disease. *Clinical science*. 95:115-128.
23. Roth TL, Sweatt JD (2011): Annual Research Review: Epigenetic mechanisms and environmental shaping of the brain during sensitive periods of development. *Journal of child psychology and psychiatry, and allied disciplines*. 52:398-408.
24. Yehuda R, Daskalakis NP, Lehrner A, Desarnaud F, Bader HN, Makotkine I, et al. (2014): Influences of maternal and paternal PTSD on epigenetic regulation of the glucocorticoid receptor gene in Holocaust survivor offspring. *The American journal of psychiatry*. 171:872-880.
25. Yehuda R, Halligan SL, Grossman R (2001): Childhood trauma and risk for PTSD: relationship to intergenerational effects of trauma, parental PTSD, and cortisol excretion. *Development and psychopathology*. 13:733-753.
26. Binder EB (2009): The role of FKBP5, a co-chaperone of the glucocorticoid receptor in the pathogenesis and therapy of affective and anxiety disorders. *Psychoneuroendocrinology*. 34 Suppl 1:S186-195.
27. Lehrner A, Bierer LM, Passarelli V, Pratchett LC, Flory JD, Bader HN, et al. (2014): Maternal PTSD associates with greater glucocorticoid sensitivity in offspring of Holocaust survivors. *Psychoneuroendocrinology*. 40:213-220.
28. Daskalakis NP, Lehrner A, Yehuda R (2013): Endocrine aspects of post-traumatic stress disorder and implications for diagnosis and treatment. *Endocrinology and metabolism clinics of North America*. 42:503-513.
29. Pratt WB, Toft DO (1997): Steroid receptor interactions with heat shock protein and immunophilin chaperones. *Endocrine reviews*. 18:306-360.
30. Wochnik GM, Ruegg J, Abel GA, Schmidt U, Holsboer F, Rein T (2005): FK506-binding proteins 51 and 52 differentially regulate dynein interaction and nuclear translocation of the glucocorticoid receptor in mammalian cells. *The Journal of biological chemistry*. 280:4609-4616.
31. Jaaskelainen T, Makkonen H, Palvimo JJ (2011): Steroid up-regulation of FKBP51 and its role in hormone signaling. *Current opinion in pharmacology*. 11:326-331.

32. Menke A, Klengel T, Rubel J, Bruckl T, Pfister H, Lucae S, et al. (2013): Genetic variation in FKBP5 associated with the extent of stress hormone dysregulation in major depression. *Genes, brain, and behavior*. 12:289-296.
33. Mehta D, Gonik M, Klengel T, Rex-Haffner M, Menke A, Rubel J, et al. (2011): Using polymorphisms in FKBP5 to define biologically distinct subtypes of posttraumatic stress disorder: evidence from endocrine and gene expression studies. *Arch Gen Psychiatry*. 68:901-910.
34. Sarapas C, Cai G, Bierer LM, Golier JA, Galea S, Ising M, et al. (2011): Genetic markers for PTSD risk and resilience among survivors of the World Trade Center attacks. *Disease markers*. 30:101-110.
35. Yehuda R, Cai G, Golier JA, Sarapas C, Galea S, Ising M, et al. (2009): Gene expression patterns associated with posttraumatic stress disorder following exposure to the World Trade Center attacks. *Biol Psychiatry*. 66:708-711.
36. Binder EB, Bradley RG, Liu W, Epstein MP, Deveau TC, Mercer KB, et al. (2008): Association of FKBP5 polymorphisms and childhood abuse with risk of posttraumatic stress disorder symptoms in adults. *Jama*. 299:1291-1305.
37. Koenen KC, Uddin M (2010): FKBP5 polymorphisms modify the effects of childhood trauma. *Neuropsychopharmacology : official publication of the American College of Neuropsychopharmacology*. 35:1623-1624.
38. Klengel T, Mehta D, Anacker C, Rex-Haffner M, Pruessner JC, Pariante CM, et al. (2013): Allele-specific FKBP5 DNA demethylation mediates gene-childhood trauma interactions. *Nature neuroscience*. 16:33-41.
39. Paakinaho V, Makkonen H, Jaaskelainen T, Palvimo JJ (2010): Glucocorticoid receptor activates poised FKBP51 locus through long-distance interactions. *Mol Endocrinol*. 24:511-525.
40. Yehuda R, Morris A, Labinsky E, Zelman S, Schmeidler J (2007): Ten-year follow-up study of cortisol levels in aging holocaust survivors with and without PTSD. *Journal of traumatic stress*. 20:757-761.
41. Spitzer RL, Williams JBW, Gibbon M (1995): Structured Clinical Interview for DSM-IV (SCID). *New York State Psychiatric Institute Biometrics Research*.
42. Blake DD, Weathers FW, Nagy LM, Kaloupek DG, Gusman FD, Charney DS, et al. (1995): The development of a Clinician-Administered PTSD Scale. *Journal of traumatic stress*. 8:75-90.
43. Bernstein DP, Stein JA, Newcomb MD, Walker E, Pogge D, Ahluvalia T, et al. (2003): Development and validation of a brief screening version of the Childhood Trauma Questionnaire. *Child abuse & neglect*. 27:169-190.
44. Spielberger CD (1968): *The state-trait anxiety inventory (S T A I) : test manual for Form X*. Palo Alto: Consulting Psychologists Press.
45. Beck AT, Ward CH, Mendelson M, Mock J, Erbaugh J (1961): An inventory for measuring depression. *Arch Gen Psychiatry*. 4:561-571.
46. Yehuda R, Labinsky E, Tischler L, Brand SR, Lavin Y, Blair W, et al. (2006): Are adult offspring reliable informants about parental PTSD? A validation study. *Annals of the New York Academy of Sciences*. 1071:484-487.
47. Yehuda R, Golier JA, Kaufman S (2005): Circadian rhythm of salivary cortisol in Holocaust survivors with and without PTSD. *The American journal of psychiatry*. 162:998-1000.

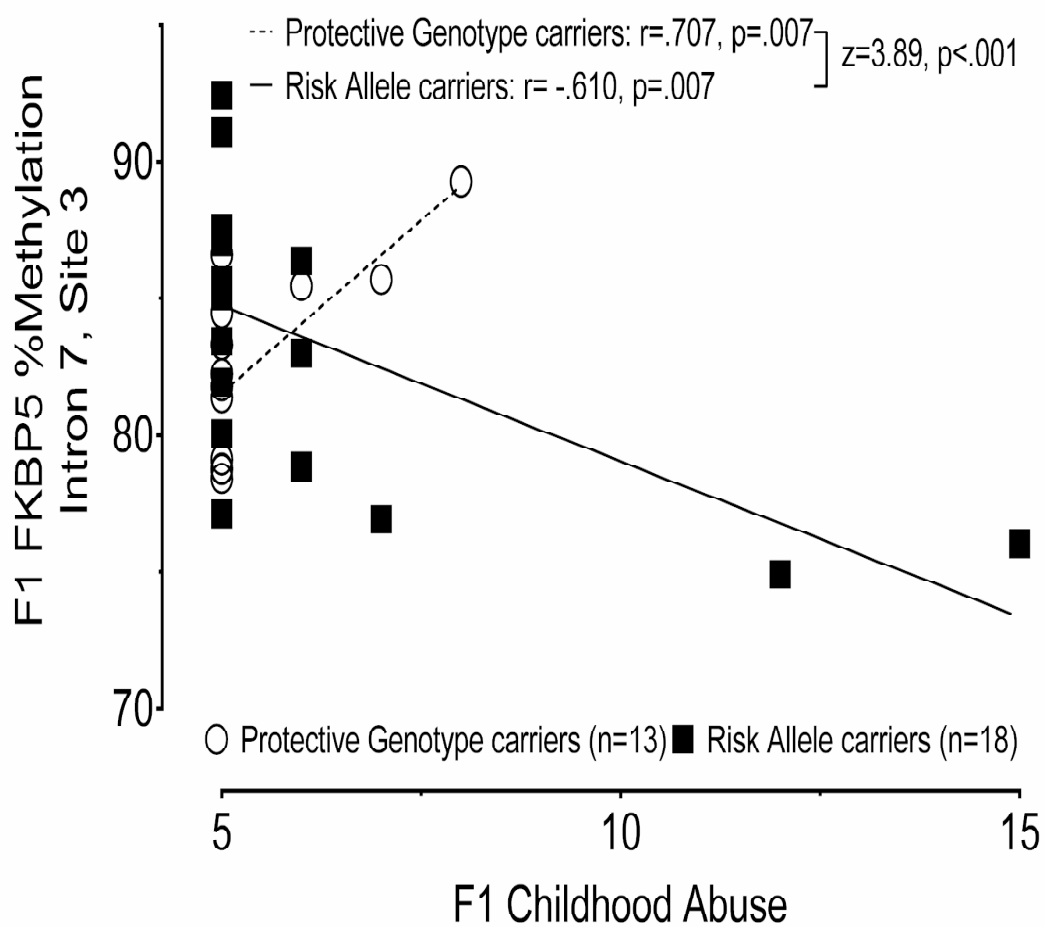
48. Perroud N, Rutembesa E, Paoloni-Giacobino A, Mutabaruka J, Mutesa L, Stenz L, et al. (2014): The Tutsi genocide and transgenerational transmission of maternal stress: epigenetics and biology of the HPA axis. *World J Biol Psychiatry*. 15:334-345.
49. Blair LJ, Nordhues BA, Hill SE, Scaglione KM, O'Leary JC, 3rd, Fontaine SN, et al. (2013): Accelerated neurodegeneration through chaperone-mediated oligomerization of tau. *J Clin Invest*. 123:4158-4169.
50. Yehuda R, Seckl J (2011): Minireview: Stress-related psychiatric disorders with low cortisol levels: a metabolic hypothesis. *Endocrinology*. 152:4496-4503.
51. Turecki G, Meaney MJ (2014): Effects of the Social Environment and Stress on Glucocorticoid Receptor Gene Methylation: A Systematic Review. *Biol Psychiatry*.
52. Daskalakis NP, Yehuda R (2014): Site-specific methylation changes in the glucocorticoid receptor exon 1F promoter in relation to life adversity: systematic review of contributing factors. *Frontiers in neuroscience*. 8:369.
53. Mehta D, Klengel T, Conneely KN, Smith AK, Altmann A, Pace TW, et al. (2013): Childhood maltreatment is associated with distinct genomic and epigenetic profiles in posttraumatic stress disorder. *Proc Natl Acad Sci U S A*. 110:8302-8307.
54. Yehuda R, Flory JD, Bierer LM, Henn-Haase C, Lehrner A, Desarnaud F, et al. (2015): Lower methylation of glucocorticoid receptor gene promoter 1F in peripheral blood of veterans with posttraumatic stress disorder. *Biol Psychiatry*. 77:356-364.
55. Wang L (2011): FKBP51 regulation of AKT/protein kinase B phosphorylation. *Current opinion in pharmacology*. 11:360-364.
56. Storer CL, Dickey CA, Galigniana MD, Rein T, Cox MB (2011): FKBP51 and FKBP52 in signaling and disease. *Trends in endocrinology and metabolism: TEM*. 22:481-490.

Figure 4



ACC

Figure 3



Accet

Figure 2

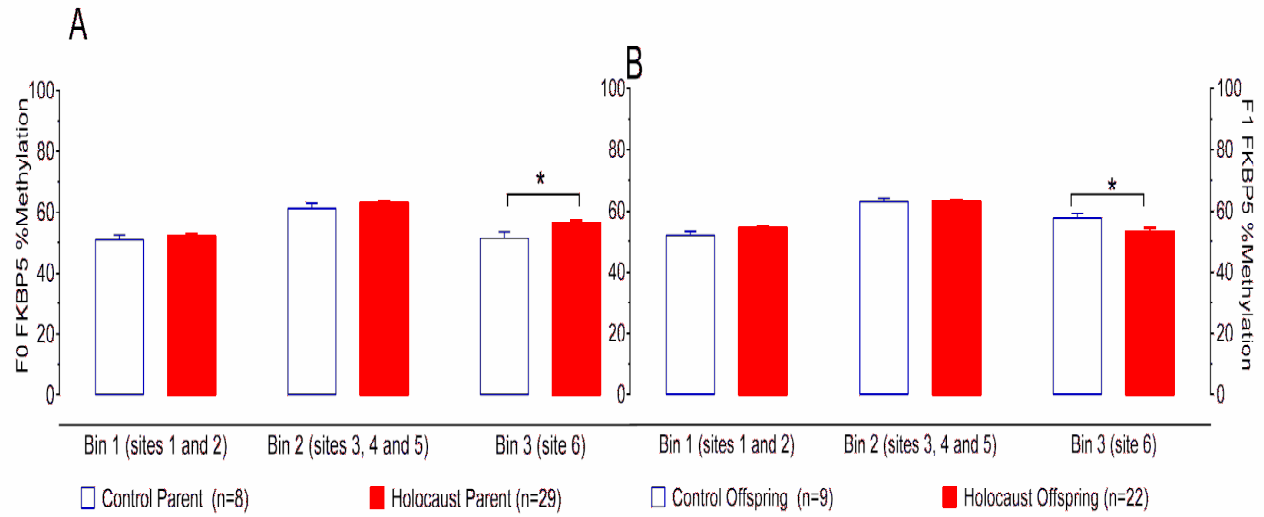


Figure 1

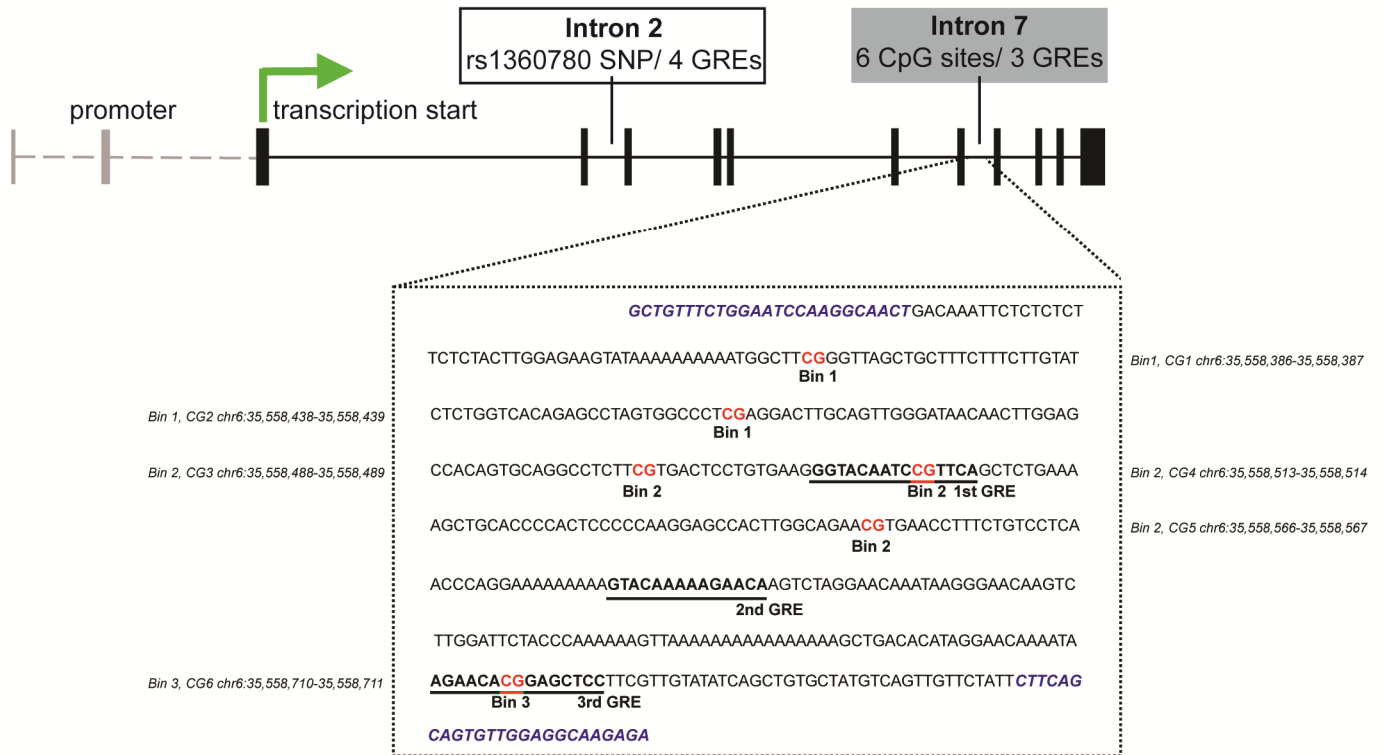
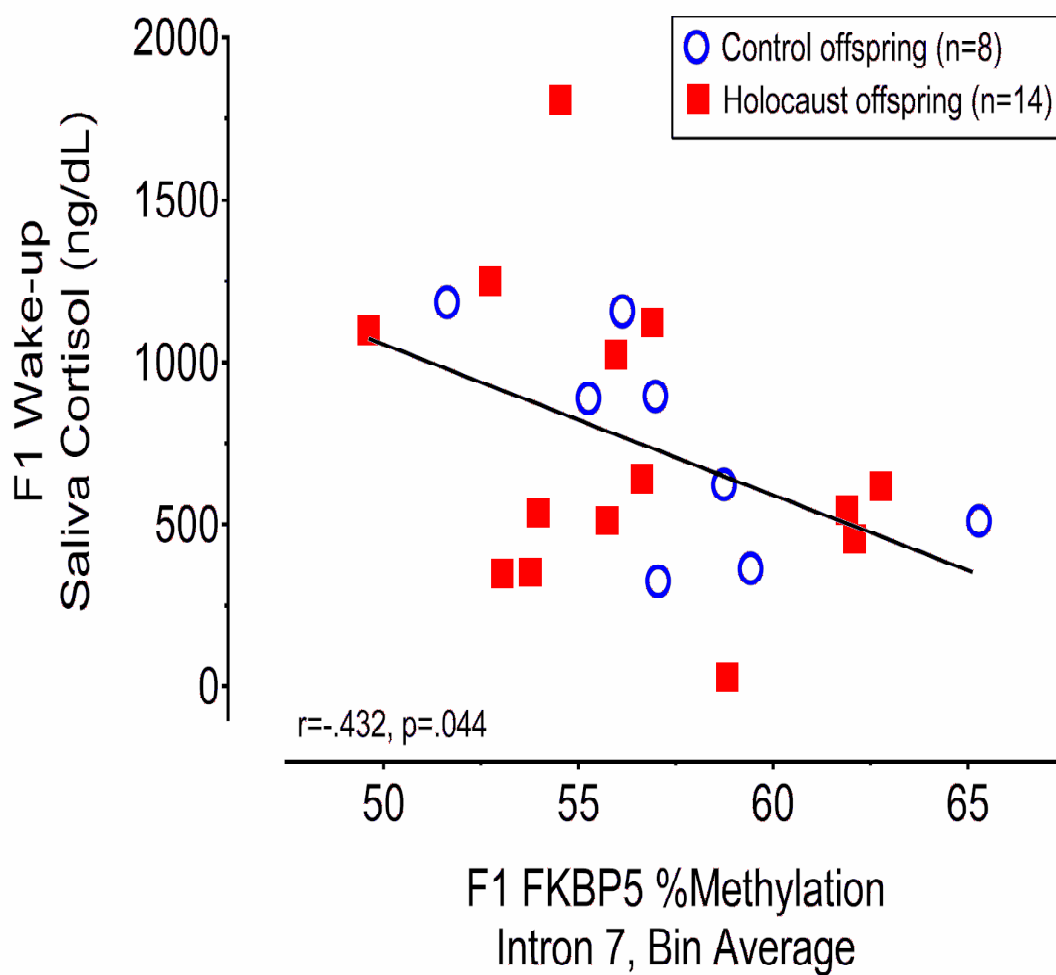


Figure 5



ACCC